



Parts Manual



Regent RD Series Lawn Tractors

19.5HP Product

Mfg. No.	Description
2690782	Regent RD, 19.5HP and 40" Mower Deck (CE/Export)

22HP Product

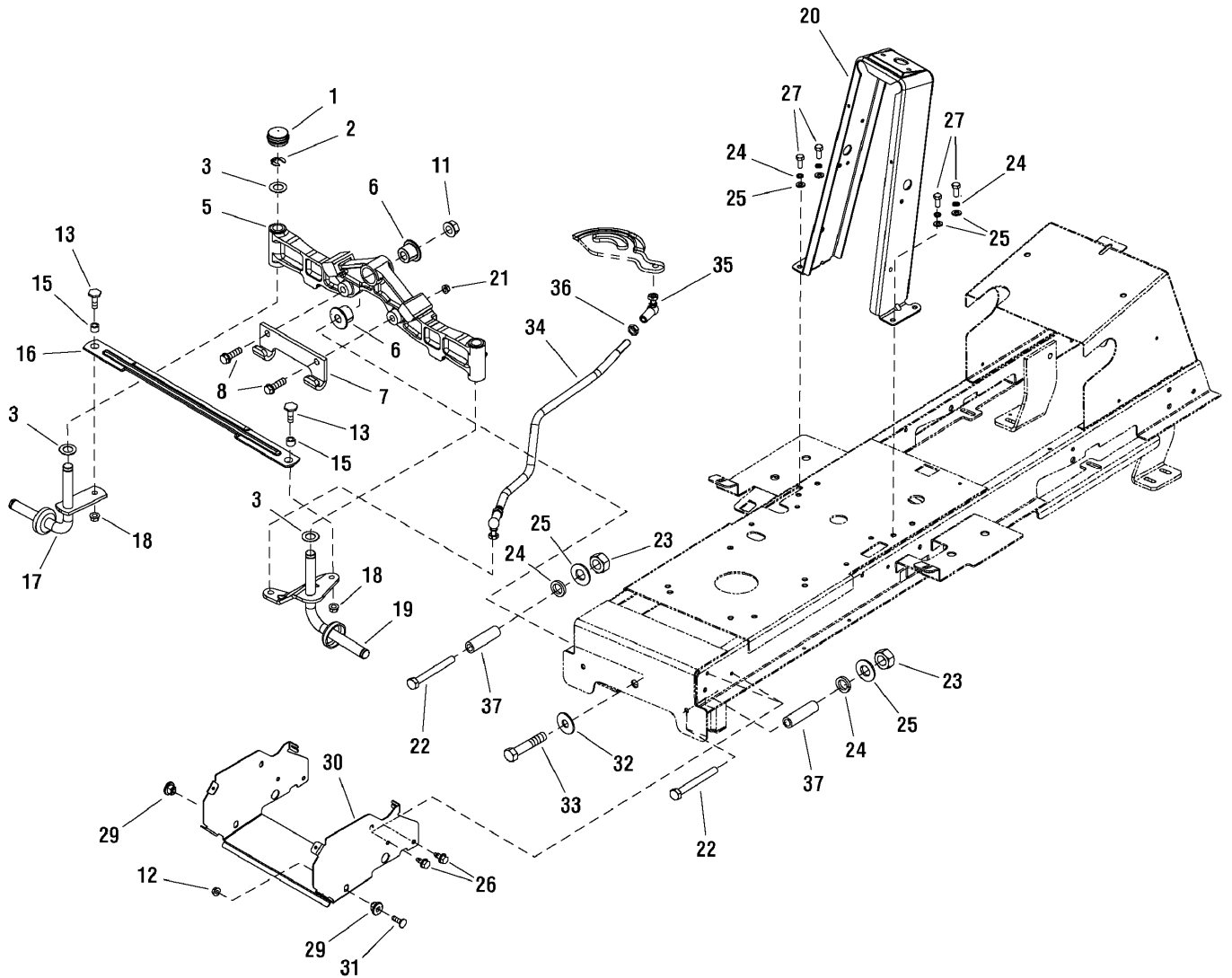
Mfg. No.	Description
2690783	Regent RD, 22HP and 40" Mower Deck (CE/Export)

PRODUCT COMPONENTS	PAGES
Frame & Front Axle Group	4
Steering Group	6
Engine Group	8
Controls Group	10
Electrical Group	14
Hood, Grille & Dash Group	18
Seat Deck & Fuel Group	20
Mulching Flap Group	22
Lift Group - Manual	24
Wheels & Tires Group	26
Decals Group	28
Back Plate Group	30
Collector Group	32
40" Mower Deck - Belt & Idler Arm Group	34
40" Mower Deck - Housing, Hitch, Arbors & Blades Group	38
Torque Specification Chart	Inside Back Cover

Frame & Front Axle Group

NOTE: Unless noted otherwise,
use the standard hardware torque
specification chart.

2988017



The above parts group applies to the following Mfg. Nos.:

2690782 - Regent RD

2690783 - Regent RD

Frame & Front Axle Group

REF NO	PART NO.	QTY.	DESCRIPTION
1	1726504	2	Cap-Hub 1.51D
2	1611710	2	Ring-Klipring
3	2860183	4	Washer-828 x 1.62 x .0583
5	1728018	1	Axel - Front (Included Ref. Nos. 1, 2, 3, 17 & 19)
6	1730186	2	Bushing Axel Pivot
7	1721918A	1	Hook-Hitch .312THK
8	1960652	2	Capscrew HD 7/16-14x1.5
11	2860646	1	Nut-Hex Flng 5/8-11LK
12	1931277	2	Nut-Hex Flng 5/16-18LK
13	1960032	2	Capscrew-Hex 3/8-16x1.25
15	1731912	2	Spacer
16	1728080A	1	Rod-Tie
17	1727872A	1	Spindle & Cup Asmy RH
18	1930645	2	Nut-Hex FLNG 3/8-16LK
19	1727873A	1	Spindle & Cup Asmy LH
20	1727260	1	Tower
21	1930650	2	LOCKNUT, Hex, Flange, 7/16-14
22	1735874	2	Bolt M8x75
23	1735934	2	Nut M8
24	1735989	6	Washer 8.4
25	1736000	6	Washer 8
26	1930601	4	Screw 5/16-18x0.62 Tap
27	1735868	4	Bolt M8x20
29	1728086	2	Pivot Hood
30	1735973	1	Support muffler – change
31	1931335	2	Bolt-RD HD 5/16-18x
32	1960035	1	Washer 0.625
33	2860744	1	Capscrew - Hex 5/8-11x3.250
34	1735919	1	Link, drag
35	1735851	2	Ball joint CS16 M10-M12
36	1735928	2	Nut M12
37	1735892	2	Distance, Front axle 0-9521-291
38	1735926	2	Nut M10 DIN6923 8

Footnotes

The above parts group applies to the following Mfg. Nos.:

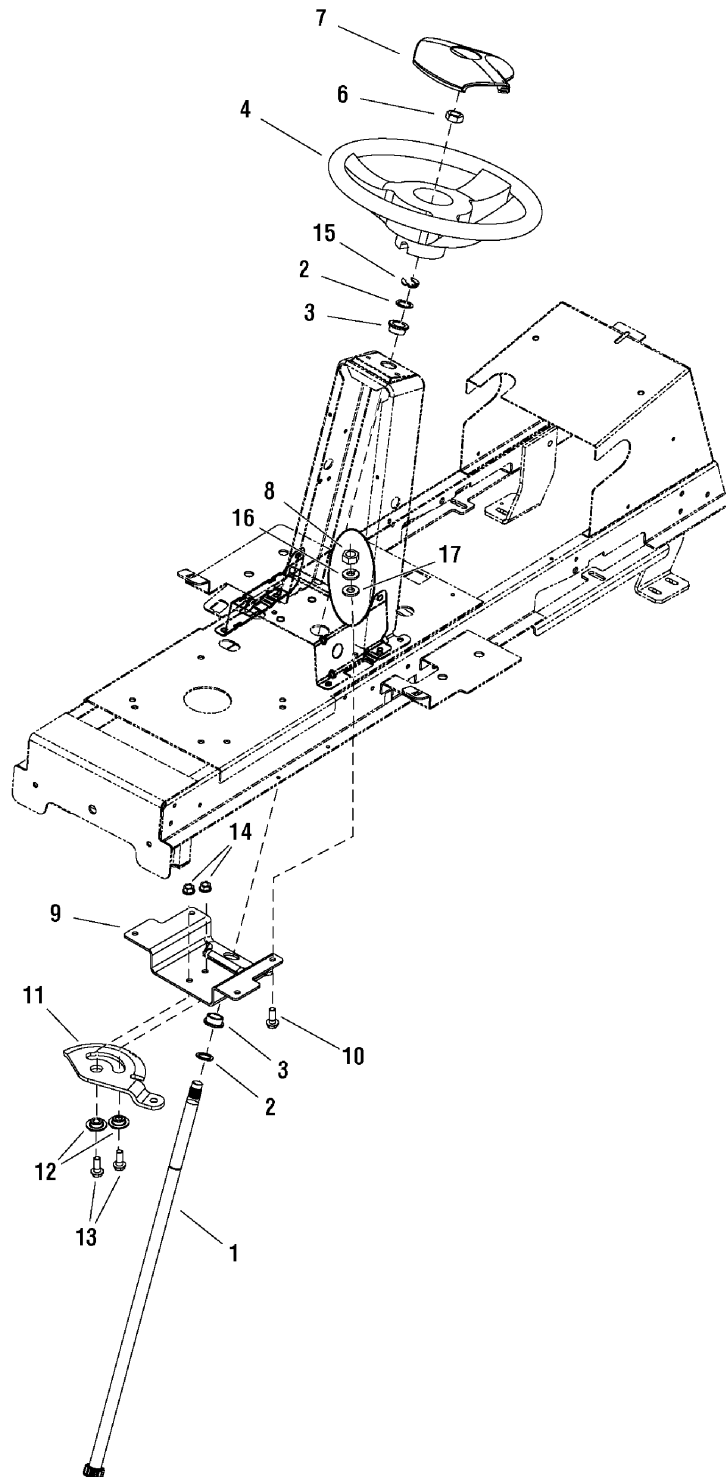
2690782 - Regent RD

2690783 - Regent RD

Steering Group

NOTE: Unless noted otherwise,
use the standard hardware torque
specification chart.

2988023



The above parts group applies to the following Mfg. Nos.:

2690782 - Regent RD

2690783 - Regent RD

Steering Group

REF NO	PART NO.	QTY.	DESCRIPTION
1	1727813	1	Shaft - Steering Gear & Spline
2	1960114	2	Washer 0.750
3	1729665	2	Bushing
4	1728069	1	Steering Wheel
6	1960576	1	Nut-Hex Lock 5/8-18
7	1722319	1	Cap Steering Wheel Simplicity
8	1735934	4	Nut M8
9	1727940	1	Bracket-sector Support
10	1735870	4	Bolt M8x25
11	1728027	1	Gear-Steering .250 THK 26teeth
12	1728122	2	Spacer-sector Gear
13	1934654	2	Screw-hex LK FLNG 3/8-16x1.00
14	1931211	2	Nut-Hex FLNG 3/8-16LK
15	1611710	1	Ring - Klipping
16	1735989	4	Washer 8.4
17	1736000	4	Washer 8

Footnotes

The above parts group applies to the following Mfg. Nos.:

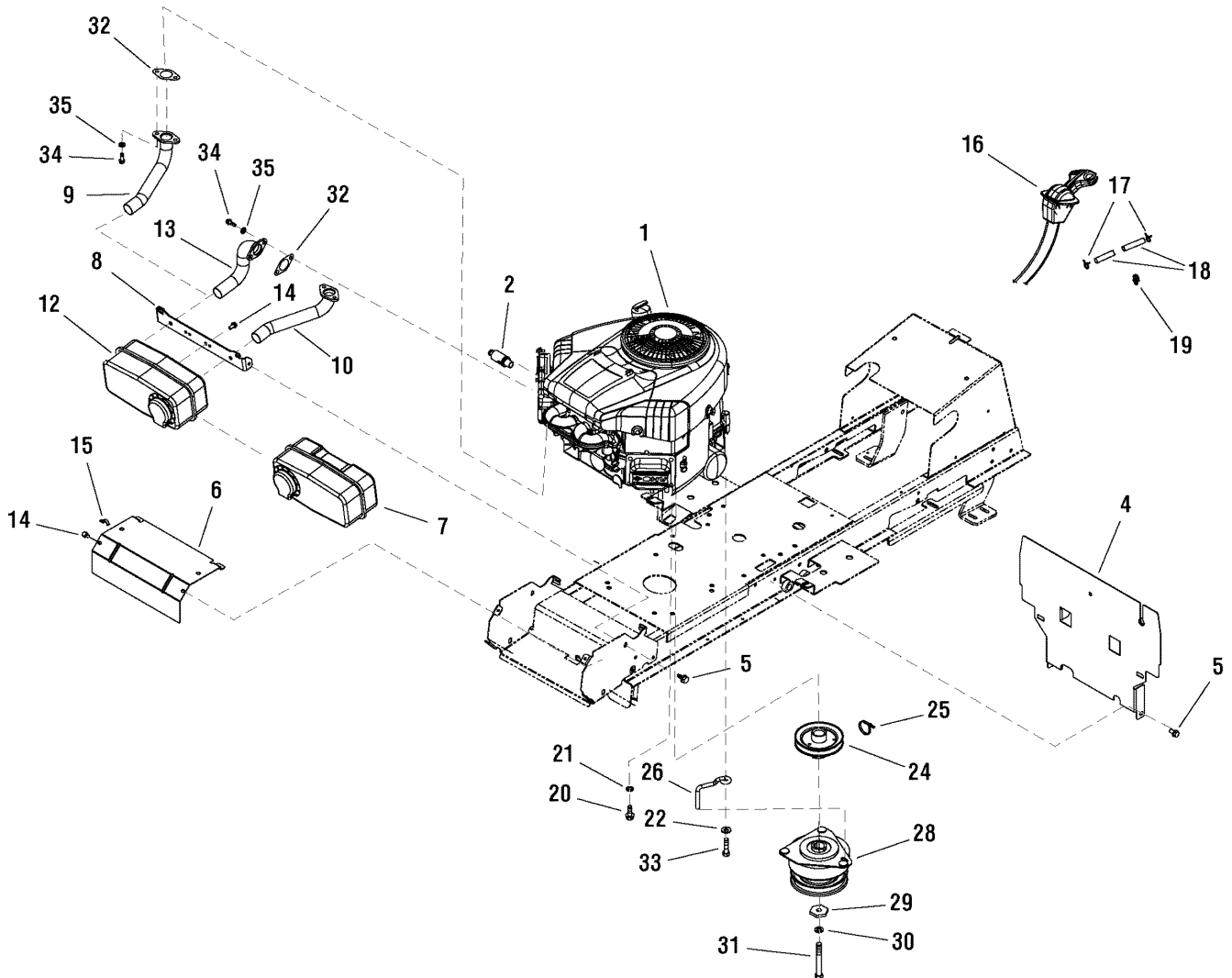
2690782 - Regent RD

2690783 - Regent RD

Engine Group

NOTE: Unless noted otherwise,
use the standard hardware torque
specification chart.

2988015



The above parts group applies to the following Mfg. Nos.:

2690782 - Regent RD

2690783 - Regent RD

Engine Group

REF NO	PART NO.	QTY.	DESCRIPTION
1	1735453	1	Engine 19,5HP Single
1	1735454	1	Engine 22HP Twin
2	1717473	1	Valve Shut-off
4	1735962	1	Shield-Heat
5	1930601	4	Screw-TAPTT 5/16-18x0.62
6	1727996	1	Shield - heat (19.5HP)
6	1727997	1	Shield - heat (22HP Twin)
7	1727994	1	Muffler B&S Twin (22HP Twin)
8	1727976	1	Bracket - Muffler Mount
9	1727979	1	Pipe Exhaust (22HP Twin)
10	1727980	1	Pipe Exhaust (22HP Twin)
12	1727993	1	Muffler B&S Single (19.5HP)
13	1728959	1	Pipe-Exhaust (19.5HP)
14	1925003	4	Screw-TAPTT 1/4-20x0.5
15	2834683	1	Clip-Wire
16	1734504	1	Control – Throttle Single
16	1734505	1	Control – Throttle Twin
17	1735883	2	Clamp-Hose UM5008
18	1735913	1	Hose Fuel 1-9920-247
19	1730268	2	Clip-Hose
20	2827187	3	Screw-TAPTT 3/8-16x1.00
21	2820427	1	Washer-LK EXT-TOOTH .375
22	1924940	1	Washer-Flat .38
24	1732576	1	Pulley & Hub Asmy
25	1735980	1	Tie
26	1732875	1	Rod - Clutch retainer long (BLK)
28	1732833	1	Clutch - Electric (LONG OGURA)
29	1708264	1	Washer-Hex .453
30	1918199	1	Lockwasher 7/16
31	1960649	1	Capscrew-hex HD 7/16-20x3.50
33	2828635	1	Screw-HX HD T/R .38-16x1.25
32	1731214	1	Gasket, Exhaust
34	1936228	2	Screw
35	19117356	2	Washer-lock

Footnotes

The above parts group applies to the following Mfg. Nos.:

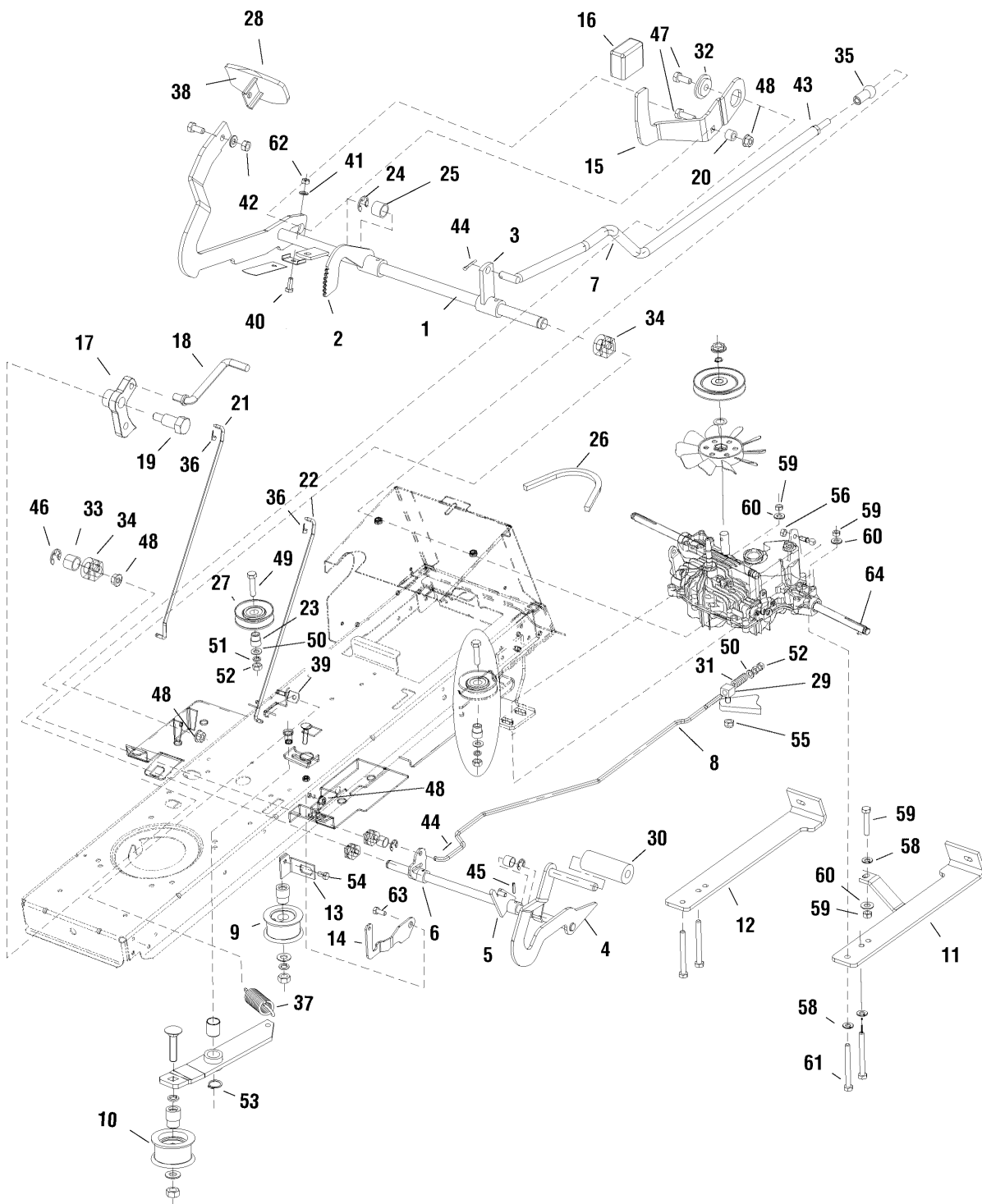
2690782 - Regent RD

2690783 - Regent RD

Controls Group

NOTE: Unless noted otherwise,
use the standard hardware torque
specification chart.

2988009



The above parts group applies to the following Mfg. Nos.:

2690782 - Regent RD

2690783 - Regent RD

Controls Group

REF NO	PART NO.	QTY.	DESCRIPTION
1	1735940	1	Pedal – Forward
2	1735952	1	Ratchet
3	1735847	1	Arm
4	1735941	1	Pedal – Reverse
5	1735918	1	Lever, Parking brake
6	1735917	1	Lever, Brake
7	1735959	1	Rod, traveling
8	1735957	1	Rod, brake
9	1735951	1	Pulley, Tensioning
10	1735950	1	Pulley, Idler
11	1735910	1	Holder, Left
12	1735911	1	Holder, Right
13	1735974	1	Support, Switch
14	1735595A	1	Latch-Brake Lock-witch change
15	1727246	1	Pedal - Reverse
16	1727259	1	Pad - Foot Pedal
17	1727897	1	Latch Cruise
18	1727899	1	Rod-Cruise .312DIA 2.83LG
19	1728976	1	Bolt-SHLDR 5/16-18 1.62LG
20	1728024	1	Spacer Foot Pedal
21	1727898	1	Rod - Cruise Latch Upper
22	1727267	1	Rod - .250dia 15.95 lg
23	1735880	2	Bushing 0-9421-418
24	1736001	1	Washer, lock
25	1735972	1	Spring, Flat 0-9740-221
26	1735987	1	V Belt, 13x2580 Li BBT
27	1735949	2	Pulley Compensa C-00237/1
28	1735942	1	Pedal, Forward Rubber
29	1735853	1	Bolt 0-9016-447
30	1727261	1	Pedal-Brake pad
31	1735968	1	Spring TLZ 250.150.0530 Yellow
32	1727935	2	Spacer Pivot
33	1735896	4	Distance, Pedal 0-9521-288
34	1735881	4	Bushing 0-9462-202
35	1735850	1	Ball Joint CS 13 DIN 71802 M8 Silver
36	1728111	2	Clip Linkage .250 dia
37	1735969	1	Spring TZ 2x14x62 Yellow
38	1735943	1	Pedal, Forward Top
39	1735875	1	Bolt, Eye M6x80 BN1006
40	1735866	1	Bolt M6x16
41	1735998	2	Washer 6.4
42	--	0	--
43	1735936	1	Nut M8
44	1735963	2	Spindle 2x20

Footnotes

The above parts group applies to the following Mfg. Nos.:

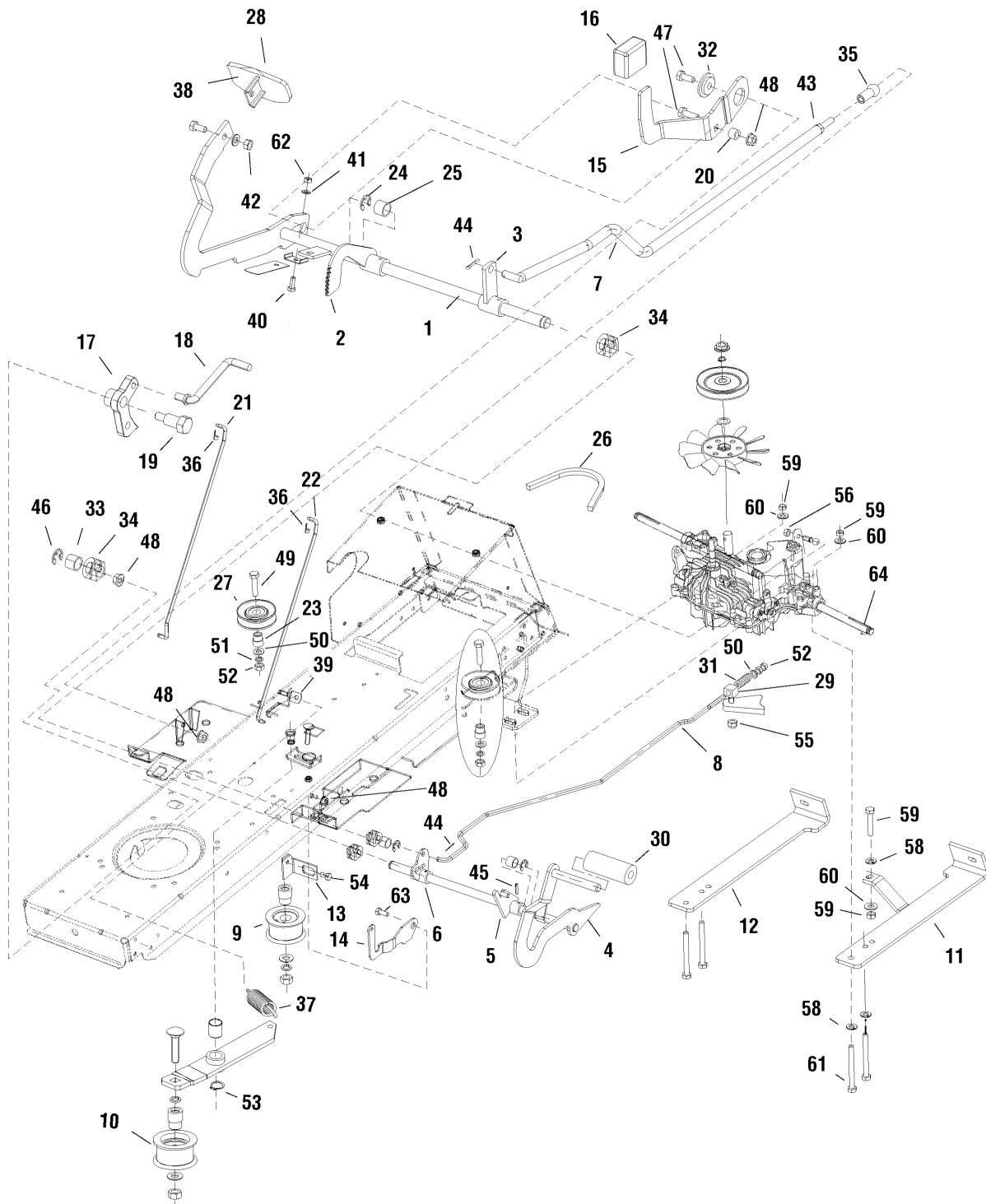
2690782 - Regent RD

2690783 - Regent RD

Controls Group

NOTE: Unless noted otherwise,
use the standard hardware torque
specification chart.

2988009



The above parts group applies to the following Mfg. Nos.:

2690782 - Regent RD

2690783 - Regent RD

Controls Group

REF NO	PART NO.	QTY.	DESCRIPTION
45	1735946	4	Pin, Flex. 5X25
46	1735920	4	Lock Ring 12
47	1960223	2	Bolt-RD HD SH SQ NK 5/16-18x1.25
48	1931277	4	Nut-HEX Flange 5/16-18 1.62LG
49	1735855	2	Bolt M10x40
50	1735990	2	Washer 10.5
51	1735991	2	Washer 10.5
52	1735925	4	Nut M10
53	1735921	1	Lock Ring 16
54	1930601	1	Screw 5/16-18x0,62 TAP
55	1735924	1	Nut M10
56	1735938	1	Nut M8 DIN 6923 8 Yellow, Tooth
57	1735873	1	Bolt M8x45
58	1735989	7	Washer 8.4
59	1735934	7	Nut M8
60	1736000	5	Washer 8
61	1735874	4	Bolt M8x75
62	--	1	Nut
63	1729576	1	Bolt SHLDR 5/16-18 1.15LG
64	1729589	1	Transmission K-46HD
66	1735933	3	Nut M6
67	2159181	1	Spring
68	1735994	3	Washer 14x26/0.2
69	1735935	1	Nut M8
70	1735854	1	Bolt M8x16

Footnotes

The above parts group applies to the following Mfg. Nos.:

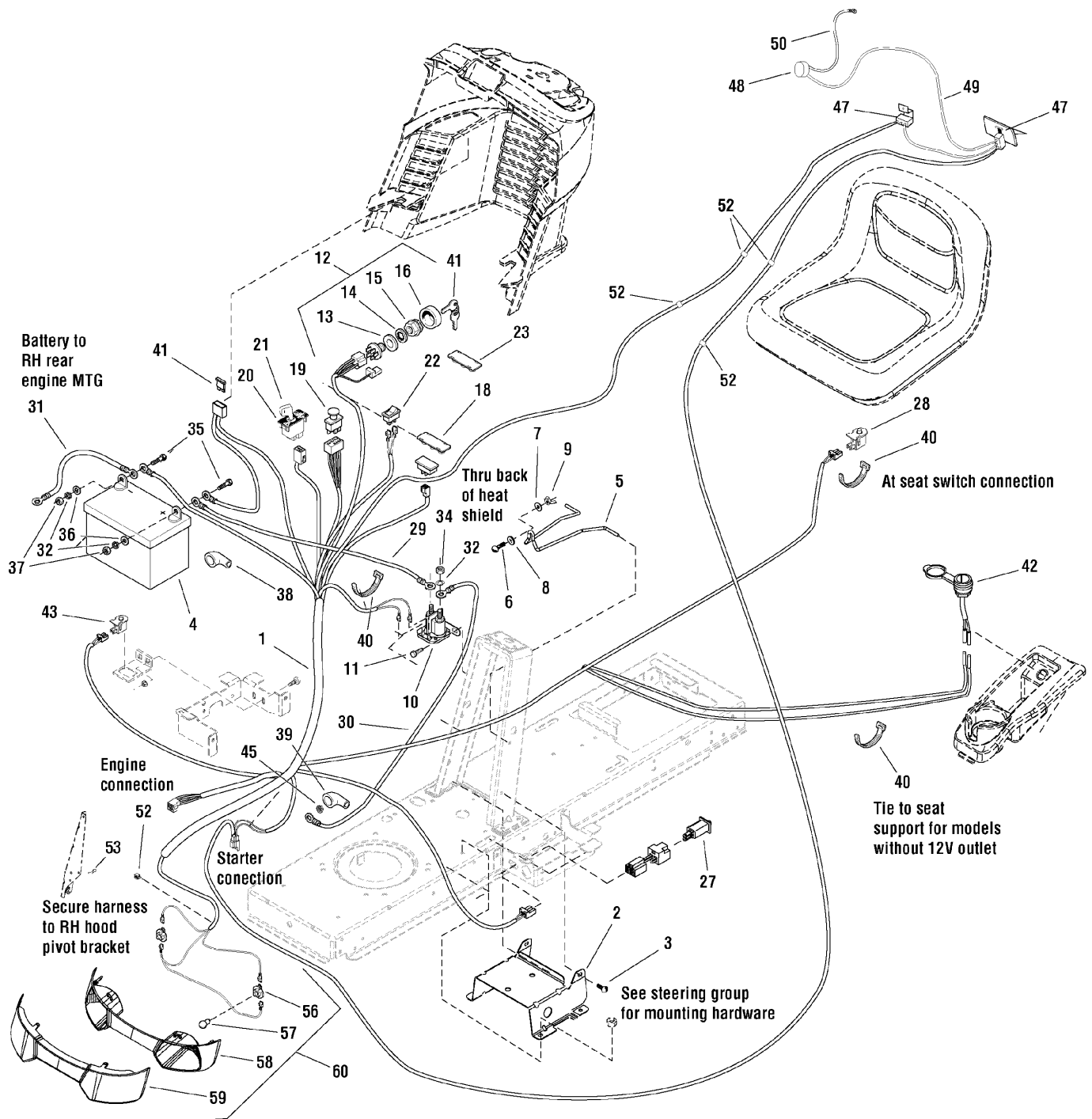
2690782 - Regent RD

2690783 - Regent RD

Electrical Group

NOTE: Unless noted otherwise, use the standard hardware torque specification chart.

2988014



The above parts group applies to the following Mfg. Nos.:

- 2690782 - Regent RD
- 2690783 - Regent RD

Electrical Group

REF NO	PART NO.	QTY.	DESCRIPTION
1	1735475	1	Harness - Main
2	1727282	1	Support - Battery
3	1930601	4	Screw Hex WSHR HD TAPTITE .31-18 x.62
4	1685215	1	Battery - 12V 230 AMP CCA DRY
5	1730007	1	Hold Down battery
6	1931318	1	Bolt-RD HD CARR .25-20 x .88
7	1960353	1	Washer Flat .25
8	1960518	1	Nut-Push .25
9	1920397	1	Nut .25 ESNA
10	1728963	1	Solenoid - 12V
11	1925003	2	Screw Hex WSHR HD TAPTITE .25-20 x.50
12	1716061	1	Switch ASMY - Ignition
13	2101025	1	Washer - .62
14	1960547	1	Lock Washer - Int. Tooth .62
15	1717549	1	Nut - Hex FLG .62 - .32 IGN Switch
16	1717550	1	Cover - For Ignition Switch
18	1729993	1	Plug - Hour Meter
19	1722887	1	Switch - PTO
20	1726556	1	Switch - RMO Module
21	1727185	1	Key & Tag
22	1716951	1	Switch - Head lights
23	1722611	1	Plug
27	1732006	1	Switch - Push (foot pedal)
28	1732005	1	Switch - Push NC (Seat)
29	1716549	1	Cable - #6 10.0 Lg Red
30	1721830	1	Cable - #6 25.0 Lg Red
31	1713163	1	Cable - #6 20.0 Lg Black
32	2816964	2	Lockwasher-spring .25
34	2860750	2	Nut-Hex KEPS LK .31-24
35	2823341	2	Capscrew-Hex .25-20x .75
36	2821319	2	Washer Flat .25
37	2816622	2	Nut-Hex .25-20
38	1677296	1	Boot - Insulator, Battery
39	1713535	1	Boot - Insulator, Red
40	1735980	5	Tie, RT 360 /L=150/
41	1725403	1	Tag - Battery Charging Warranty
42	7073090	1	12V AUX. PLUG W/Cover
43	1732004	1	Switch, NO (RMO)
44	1732007	1	Plug
45	1960294	1	Nut FLG WHIZ .25-20
46	1726557	1	Key - RMO Module
47	1735922	2	Microswitch MKH 12 D13 S1
48	1735852	1	Beeper PF 27 A 29 EP
49	1736003	1	Wire 9-8316-616

Footnotes

The above parts group applies to the following Mfg. Nos.:

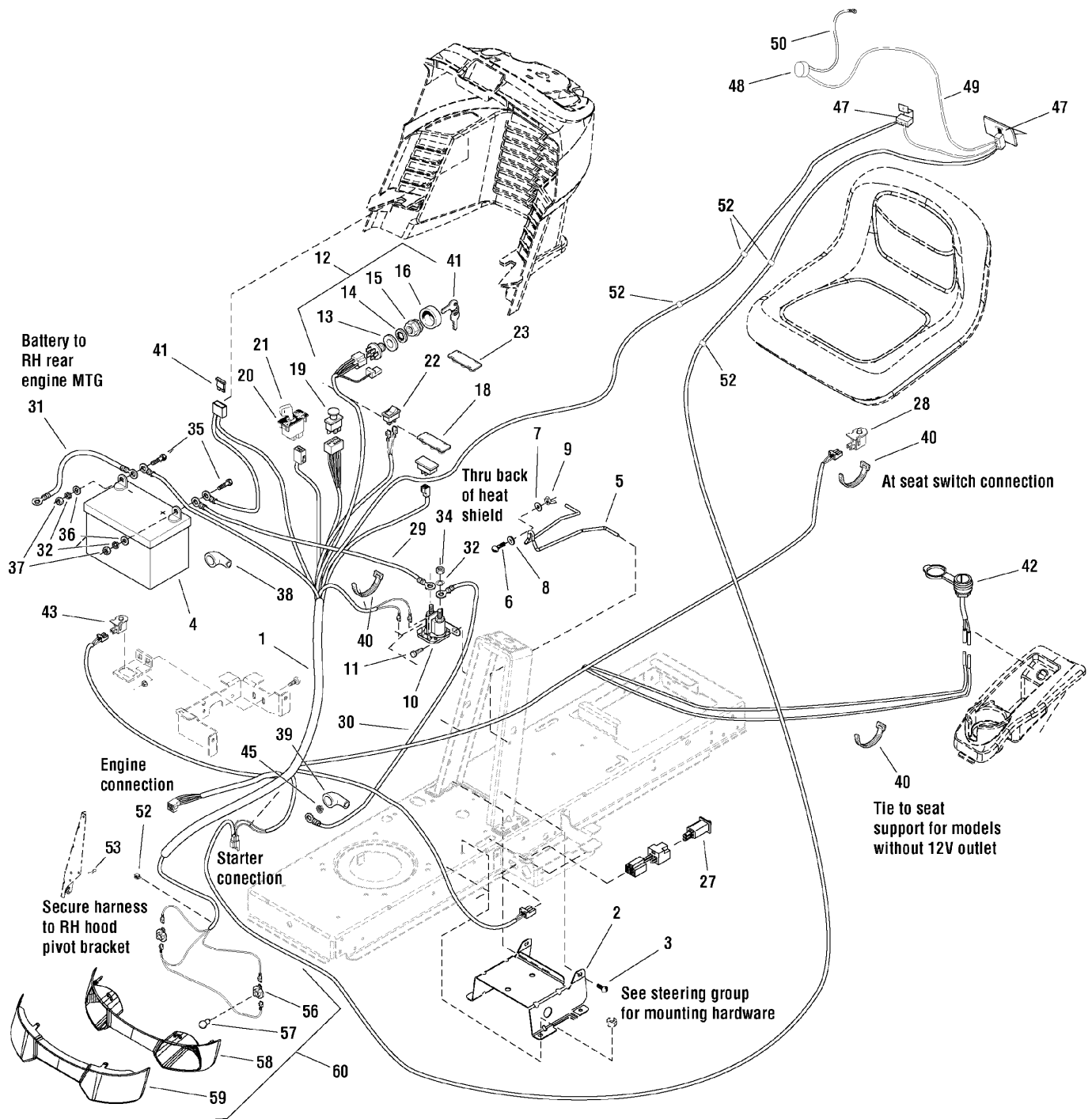
2690782 - Regent RD

2690783 - Regent RD

Electrical Group

NOTE: Unless noted otherwise, use the standard hardware torque specification chart.

2988014



The above parts group applies to the following Mfg. Nos.:

- 2690782 - Regent RD
- 2690783 - Regent RD

Electrical Group

REF NO	PART NO.	QTY.	DESCRIPTION
50	1736002	1	Wire 9-8316-615
52	1735882	7	Cable Clip WSBH 1-0-1
53	2834683	1	Clip, Speed Wire
54	1734025	1	Plug – Shut Off
55	1735884	1	Clip, cable WCK 460 01/A
56	1723451	2	SOCKET ASSEMBLY
57	1677371	2	BULB, 1141-12V 21CP
58	1728973	1	REFLECTOR, Headlight
59	1728974	1	LENS, Headlight
60	1727296	1	HEADLIGHT ASSEMBLY (Includes Ref. 24, 25, 26 & 27)
61	1717163	1	IGNITION KEY (Set of 2)

Footnotes

The above parts group applies to the following Mfg. Nos.:

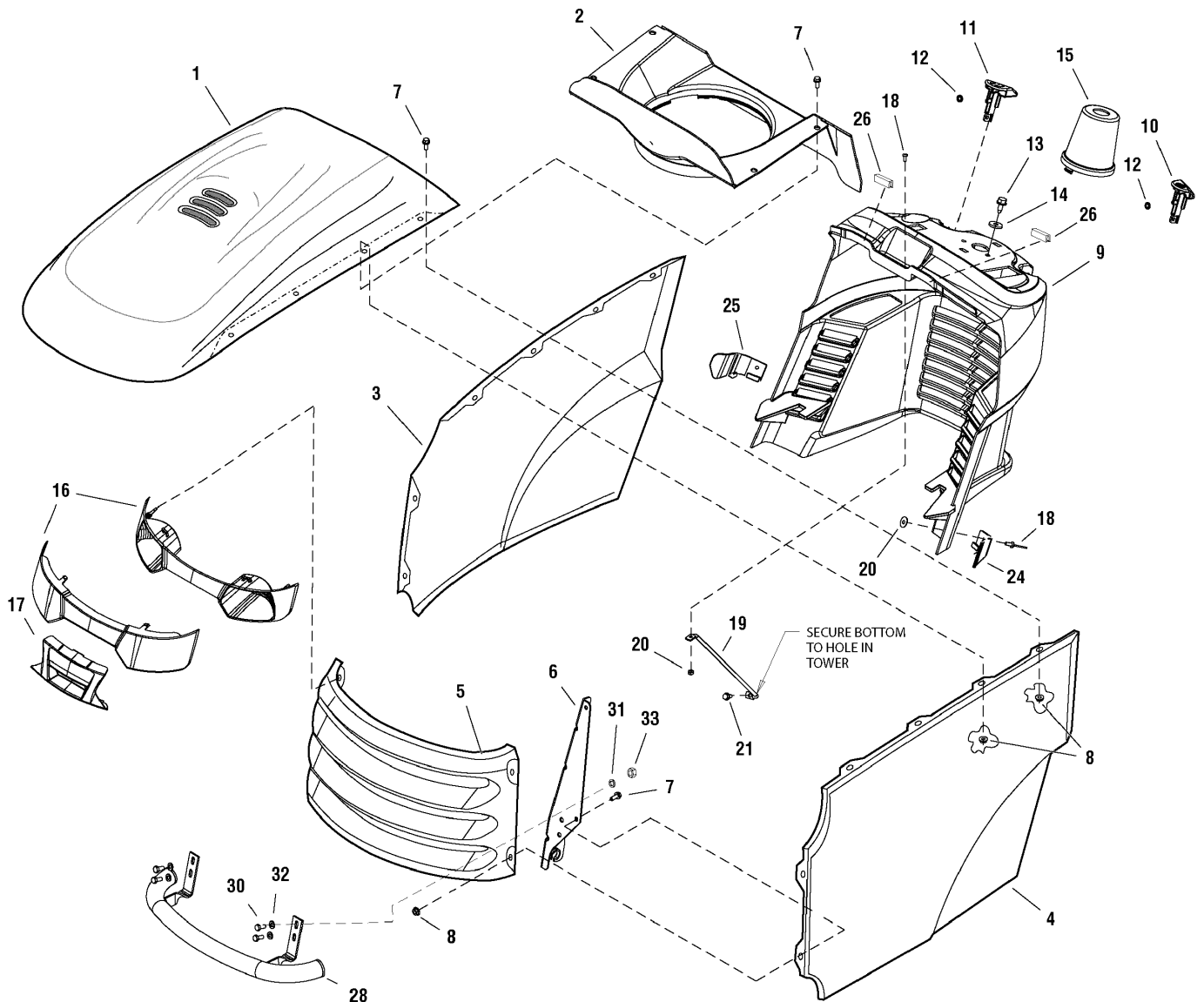
2690782 - Regent RD

2690783 - Regent RD

Hood, Grille & Dash Group

NOTE: Unless noted otherwise,
use the standard hardware torque
specification chart.

2988018



The above parts group applies to the following Mfg. Nos.:

2690782 - Regent RD

2690783 - Regent RD

Hood, Grille & Dash Group

REF NO	PART NO.	QTY.	DESCRIPTION
1	1722110C	1	Hood - W/ Louvers
2	1733457	1	Duct - Air Inlet
3	1728029C	1	Panel - Hood RH Side
4	1728030C	1	Panel - Hood LH Side
5	1727297C	1	Grille
6	1727279	1	Hinge - Hood LH
7	1960295	12	CS-HEX LK ¼-20x0.625
8	1930641	12	Nut - Hex FLG LK .25-20
9	1727293	1	Dashboard
10	1728089	1	Knob - Brake Lock
11	1728090	1	Knob - Cruise Lock
12	1960518	2	Nut - Push Pal .250
13	1664847	2	CS - Hex Tapit 5/16-18x0.75
14	1919381	2	Washer 0.312
15	1727999	1	Cover Steering Shaft
16	1727296	1	Headlight Asmy
17	1728975	1	Insert - Light Bar
18	1960392	3	Screw - Phillips HD
19	1723123	1	Rod - Dash Support
20	1933896	3	Nut Flange
21	1925003	1	Screw-Self Tap
24	1732030	1	Guide - Hood LH
25	1732031	1	Guide - Hood RH
26	1735878	2	Braid, steel insert 0-9634-219
27	1727280	1	Hinge - Hood RH
28	1735879	1	Bumper, Front
30	1735868	4	Bolt M8x20
31	1735989	4	Washer 8.4
32	1736000	4	Washer 8
33	1735934	4	Nut M8
34	1731971	1	Ending Rubber

Footnotes

The above parts group applies to the following Mfg. Nos.:

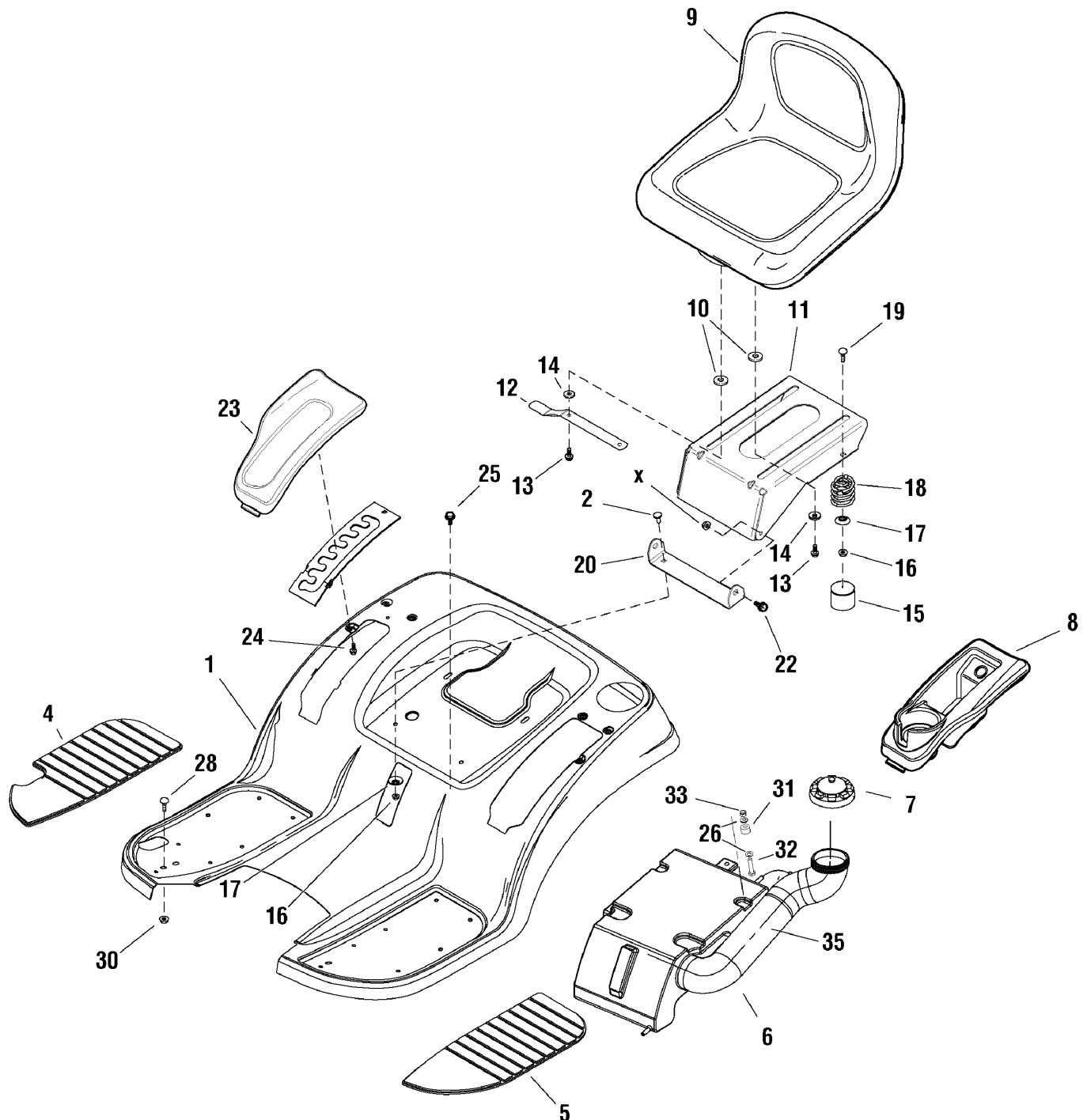
2690782 - Regent RD

2690783 - Regent RD

Seat Deck & Fuel Group

NOTE: Unless noted otherwise,
use the standard hardware torque
specification chart.

2988021



The above parts group applies to the following Mfg. Nos.:

2690782 - Regent RD

2690783 - Regent RD

Seat Deck & Fuel Group

REF NO	PART NO.	QTY.	DESCRIPTION
1	1727264D	1	Deck - Seat W/ Foot Rests
1	1727264C	0	Deck - Seat W/ Foot Rests
2	1931333	2	Bolt-0.31-18x0.75
4	1728007	1	Pad - Footrest RH
5	1728006	1	Pad - Footrest LH
6	1735976	1	Tank, Fuel 9-2770-244
7	1715917	1	Cap-Fuel
8	1729001	1	Pod - LH Cup Holder
9	1730159	1	Seat - High Back
10	1731300	4	Spacer
11	1727265	1	Support - Seat
12	1727268	1	Latch - Seat
13	1960667	4	Screw -Flg. 5/16-18x1.0 DOG PT
14	1919381	4	Washer 0.312
15	1704724	2	Cover - Spring
16	1960686	6	Nut-Hex FLNG 5/16-18
17	1709256	4	Washer Spring
18	1704728	2	Spring - Compression
19	1960282	2	Bolt RD 5/16-18x0.75
20	1727266	1	Pivot - Seat
22	1729576	2	Bolt-SHLDR 5/16-18x1.15
23	1729000	1	Pod - RH Lift
24	1960536	6	Screw-hex PLASTT 0.250x0.50
25	1735854	2	Bolt M 8x16
26	1735989	4	Washer – 8.4
27	1736000	4	Washer 8
28	1735869	2	Bolt M8x20
30	1735937	2	Nut M8
31	1735894	1	Distance, Lift 0-9521-289
32	1735867	1	Bolt M6x35
33	1735932	1	Nut M6
34	1735878	2	Braid, steel insert 0-9634-219
35	1735914	1	Hose, air escape 1-9920-248
36	1735883	2	Clip UM 5008
37	1735999	1	Washer 6.6
38	1735961	2	Screw ST 5,5x19
--	1735912	1	Holder, tank

Footnotes

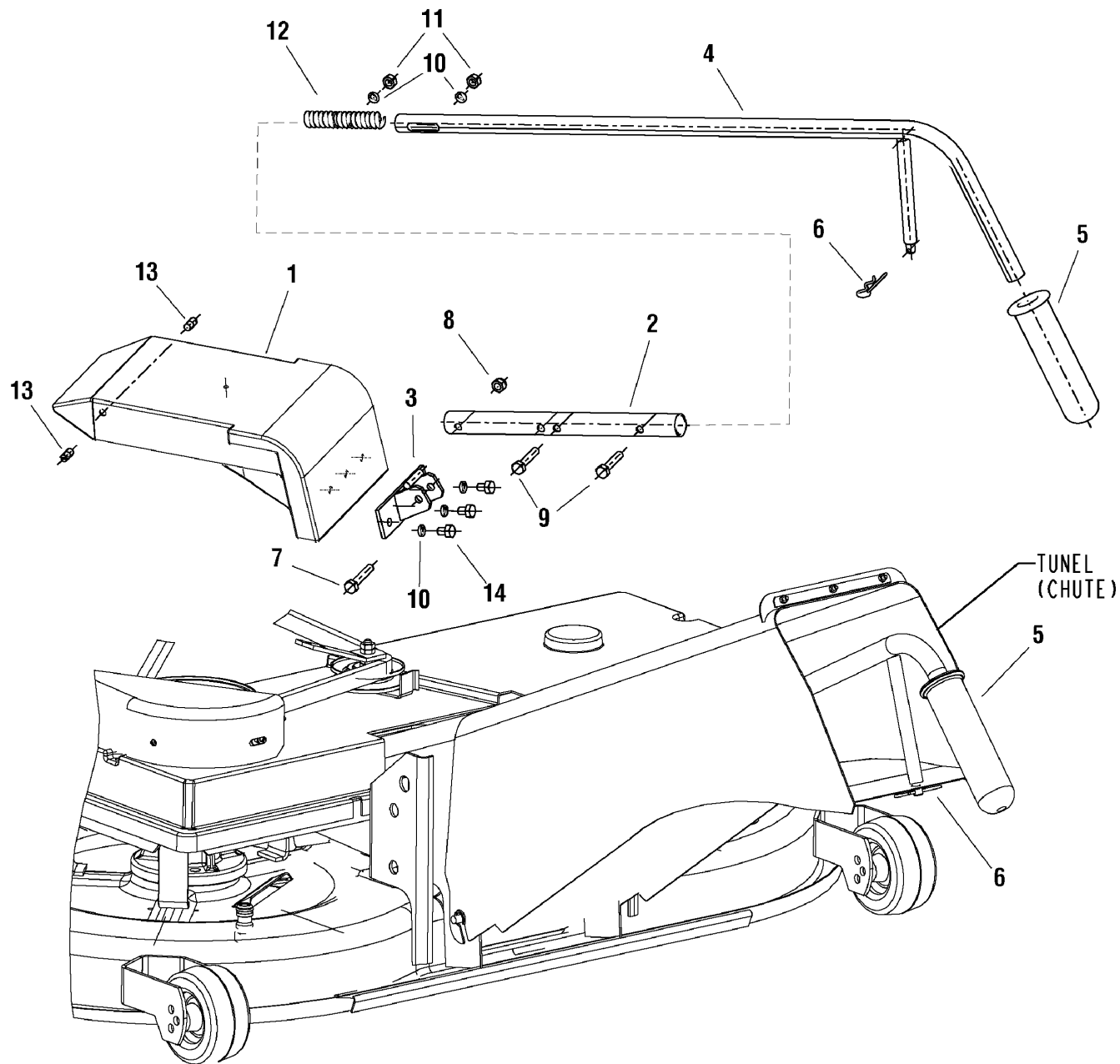
The above parts group applies to the following Mfg. Nos.:

2690782 - Regent RD
2690783 - Regent RD

Mulching Flap Group

NOTE: Unless noted otherwise,
use the standard hardware torque
specification chart.

2988026



The above parts group applies to the following Mfg. Nos.:

2690782 - Regent RD

2690783 - Regent RD

Mulching Flap Group

REF NO	PART NO.	QTY.	DESCRIPTION
1	1736134		MOWING FLANGE 9-8547-386
2	1736133		TUBE
3	1736132		HOLDER
4	1736131		FULL TUBE
5	1736130		HANDLE 02/20-110-RED
6	1736129		SPLIT PIN 0-9245-240
7	1736128		SCREW M8X45 CSN021103.55
8	1736127		NUT M8 CSN021492.55
9	1736126		SCREW M8X35 CSN021103.55
10	1736125		WASHER 8 CSN021740.15
11	1736124		NUT M8 CSN021401.55
12	1736123		SPRING TLZ200.180.0950
13	1736122		CASING 0-9311-816
14	1736121		SCREW M8X12 CSN021103.25
15	1687400		MULCH PLUG ASSEMBLY - KIT

Footnotes

The above parts group applies to the following Mfg. Nos.:

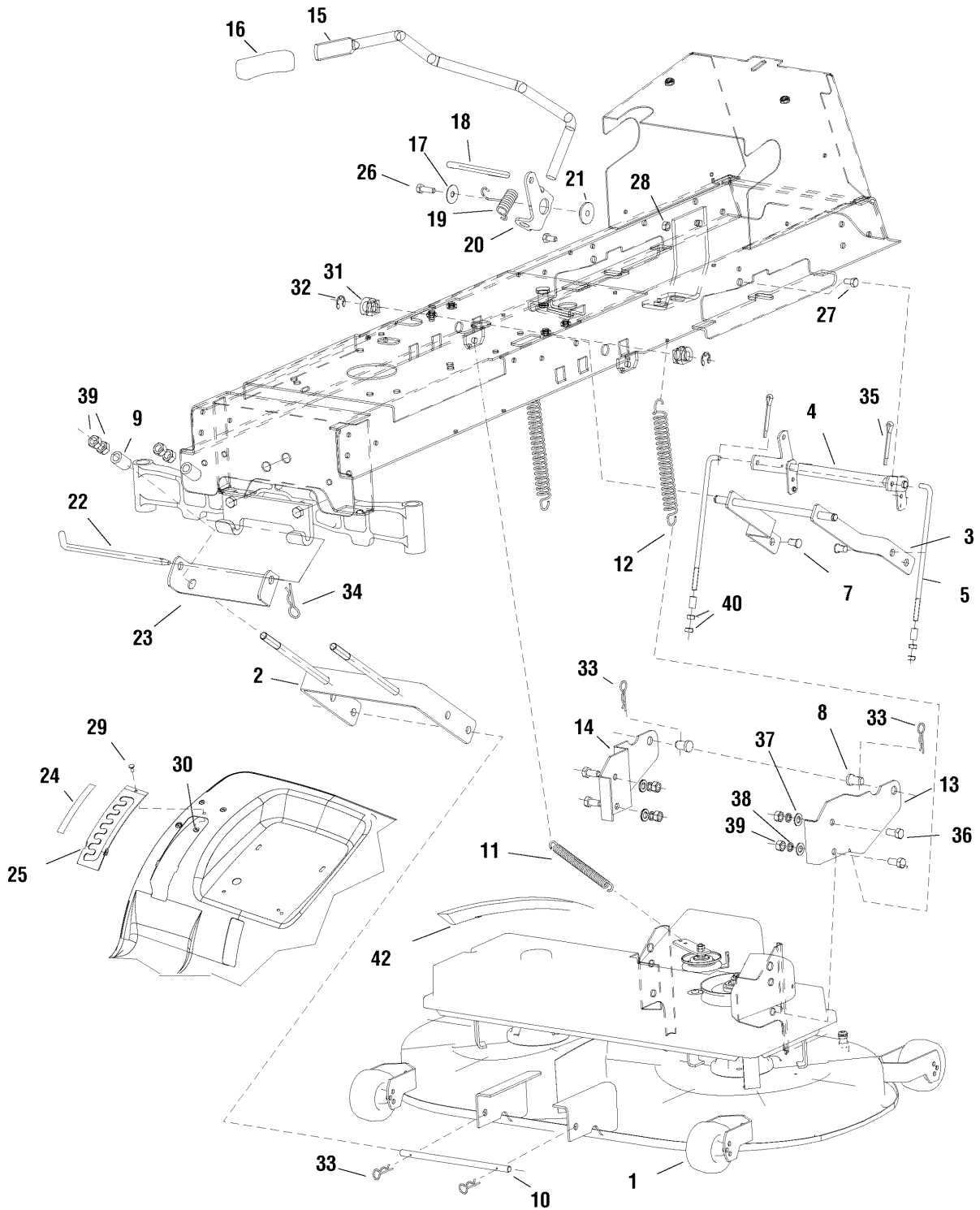
2690782 - Regent RD

2690783 - Regent RD

Lift Group - Manual

NOTE: Unless noted otherwise,
use the standard hardware torque
specification chart.

2988020



The above parts group applies to the following Mfg. Nos.:

2690782 - Regent RD

2690783 - Regent RD

Lift Group - Manual

REF NO	PART NO.	QTY.	DESCRIPTION
1	1735923	1	Mowing mechanism
2	1735902	1	Hinge, Front
3	1735848	1	Arm, Lift
4	1735958	1	Rod, Lift
5	1735979	2	Tie rod, lift 0-8040-311
6	1735893	2	Distance, Lift 0-9521-289
7	1735945	2	Pin 0-9016-463
8	1735947	2	Pin, Mowing 1-9310-417
9	1735895	2	Distance, Lift Hitch 0-9521-290
10	1735944	1	Pin
11	1735966	1	Spring 0-9746-460
12	1735967	2	Spring 0-9746-483
13	1735898	1	Handle, Extend. Left
14	1735899	1	Handle, Extend. Right
15	1735956	1	Rod - Lift -Change
16	1722302	1	Grip - Black
17	1960044	1	Washer -0.312
18	1727954	1	Rod - Lift .375 dia
19	1729652	1	Spring - TORS
20	1728990	1	Clevis - Lift
21	1727935	1	Spacer - Pivot
22	1731414	1	Pin - Hitch
23	1730221A	1	Front Hanger
24	1730264	1	Decal - Height of Cut
25	1727985	1	Quadrant - Lift Height
26	1921333	1	Capscrew-HD 5/16-18x1.00
27	1930601	2	Capscrew-HD 5/16-18x0.62 TAP
28	1931277	1	Nut-HEX Flng LK 5/16-18
29	1960252	1	Bolt-RD1/4-20x0.625
30	1930641	1	Nut-Hex FLNG WHIZ 1/4-20
31	1735881	2	Bushing 0-9462-202
32	1735920	2	Lock Ring 12
33	1735785	4	Spindle, Spring
34	2176012	1	Clip - Pin Safety
35	1735964	4	Spindle 3.2x25
36	1735856	4	Bolt M12x25
37	1735993	4	Washer 13
38	1735992	4	Washer 12
39	1735927	8	Nut M12
40	1735925	4	Nut M10
42	1735986	1	V Belt 17x1200 Li

Footnotes

The above parts group applies to the following Mfg. Nos.:

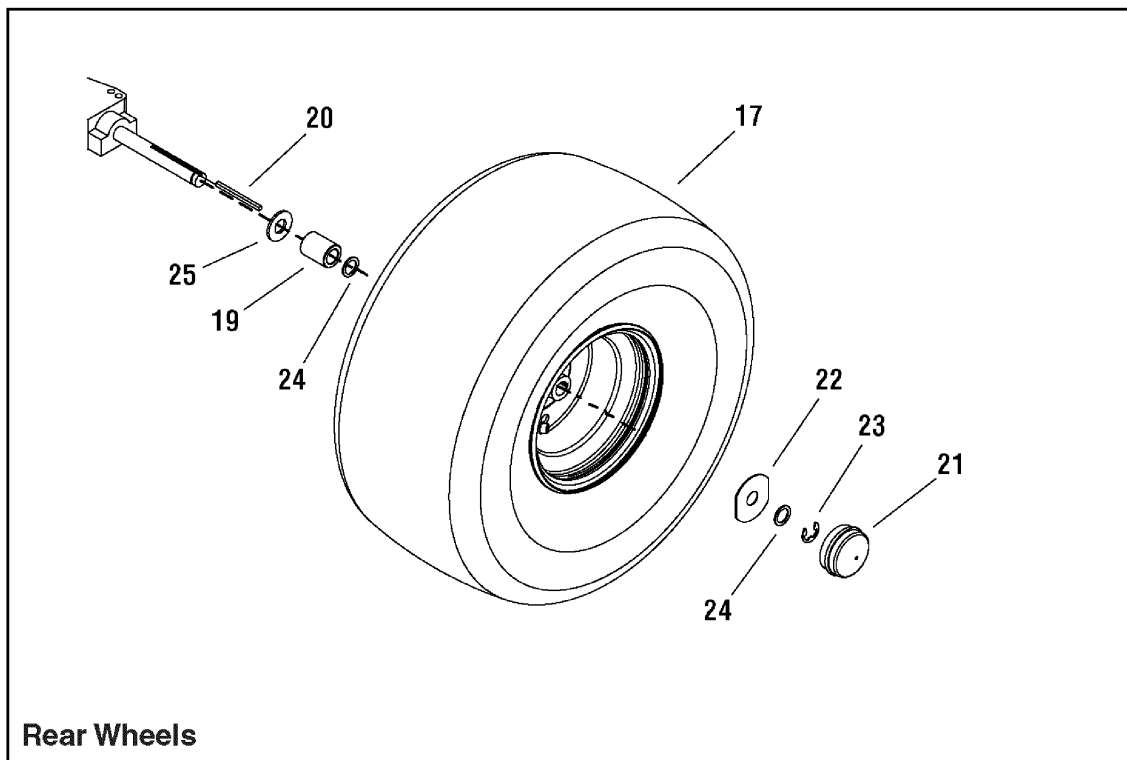
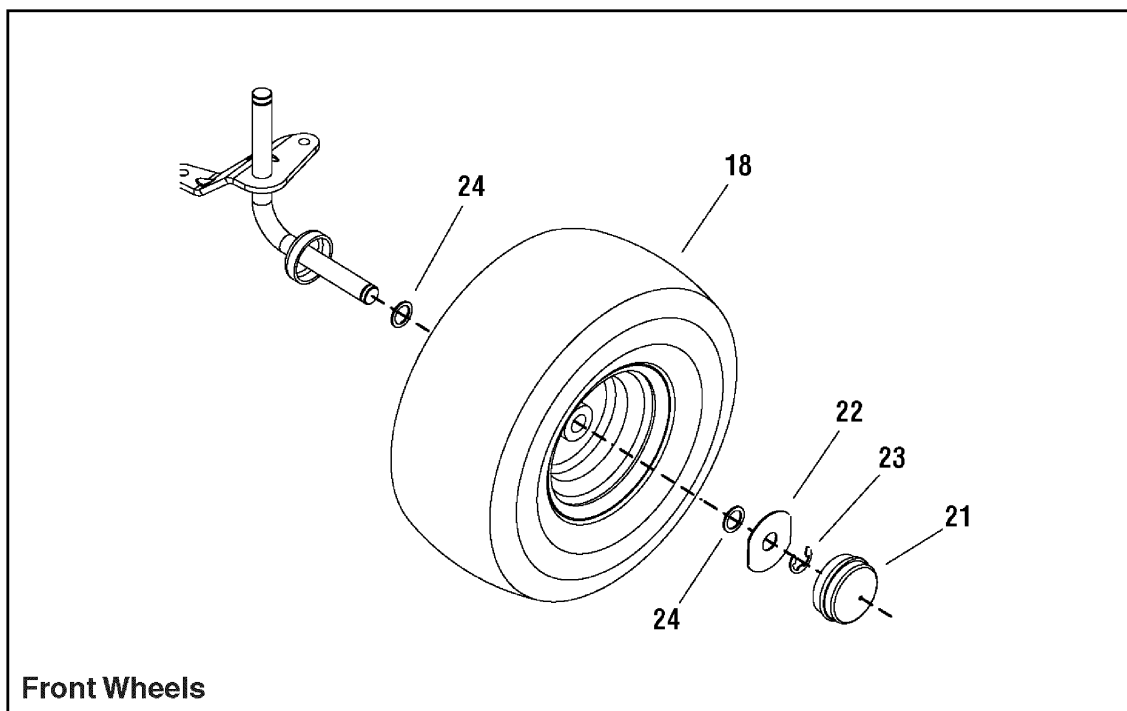
2690782 - Regent RD

2690783 - Regent RD

Wheels & Tires Group

NOTE: Unless noted otherwise,
use the standard hardware torque
specification chart.

2988024



The above parts group applies to the following Mfg. Nos.:

2690782 - Regent RD
2690783 - Regent RD

Wheels & Tires Group

REF NO	PART NO.	QTY.	DESCRIPTION
17	1732324	2	W & Tire 22 x 10 - 8
18	1729708	2	Wheel & Tire Asmy front
19	1730181	2	Spacer Axle rear PM hunter
20	1713409	2	Key Parallel PLN .187x.187x3.0 STL
21	1722676	4	CAP-Hub 2.361 D GREY POLY 1.3H VIPER
22	1722717	4	Washer-SPCL 0.7551D 2.562 0.6THK YEL
23	2827794	4	Ring-Klipring EXT For .75 Dia Shaft blk
24	1960160	8	Washer 0.75x0.761Dx1.62Dx12THK)Yel
25	2860202	2	Washer - 0.75"
26	1735988	4	Washer

Footnotes

The above parts group applies to the following Mfg. Nos.:

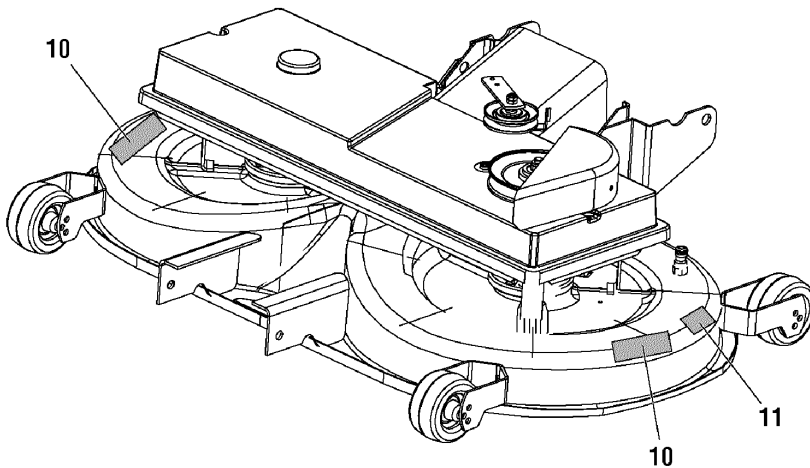
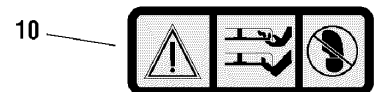
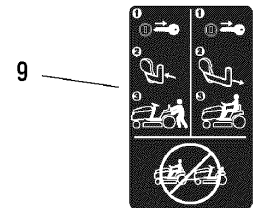
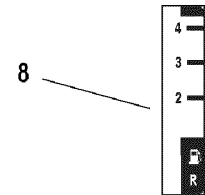
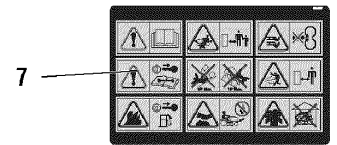
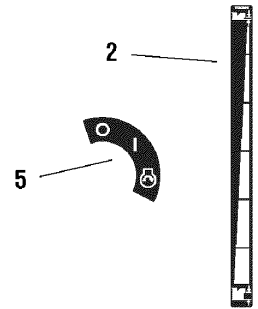
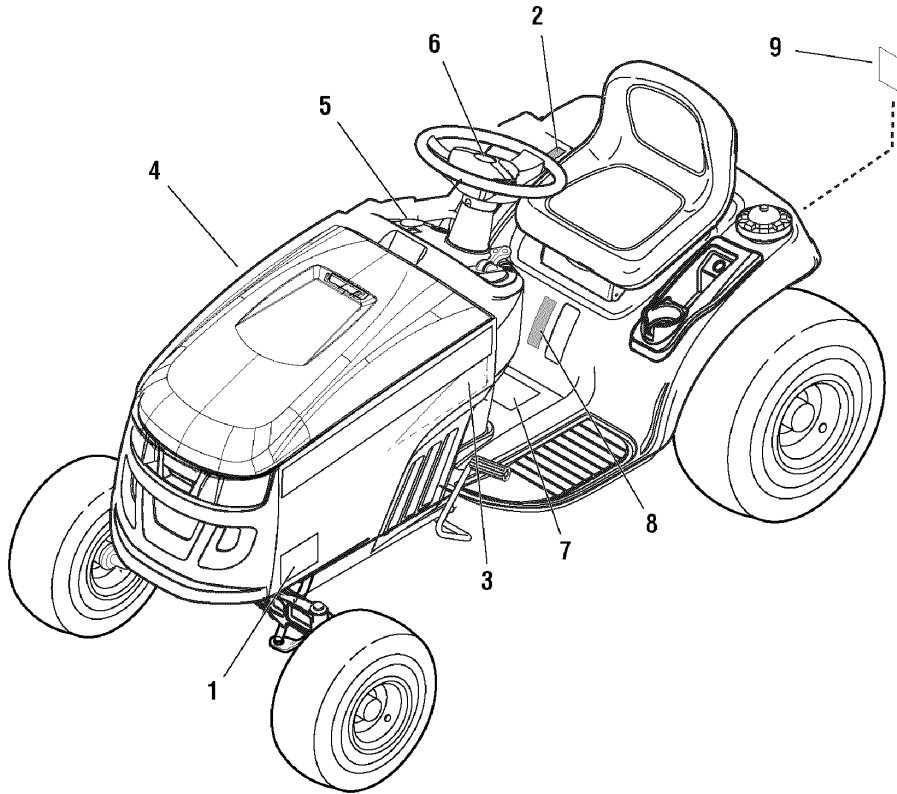
2690782 - Regent RD

2690783 - Regent RD

Decals Group

NOTE: Unless noted otherwise,
use the standard hardware torque
specification chart.

2988010



The above parts group applies to the following Mfg. Nos.:

2690782 - Regent RD
2690783 - Regent RD

Decals Group

REF NO	PART NO.	QTY.	DESCRIPTION
1	1735396	1	Decal – 19.5HP
1	1726944	1	Decal - 22HP
2	1730264	1	Decal - Mower Height
3	1731390	1	Decal - Simplicity LH Stripe
4	1731391	1	Decal – Simplicity RH Stripe
5	1722806	1	Decal - Ignition Switch White/Blk
6	1731418	1	Decal – Simplicity Steering Wheel
7	1734027	1	Decal - Tunnel
8	1735889	1	Decal – Fuel level
9	1735265	1	Decal - Trans/Tow Release Lever
10	1735890	2	Decal – Safety
11	1735891	1	Decal Noise

Footnotes

The above parts group applies to the following Mfg. Nos.:

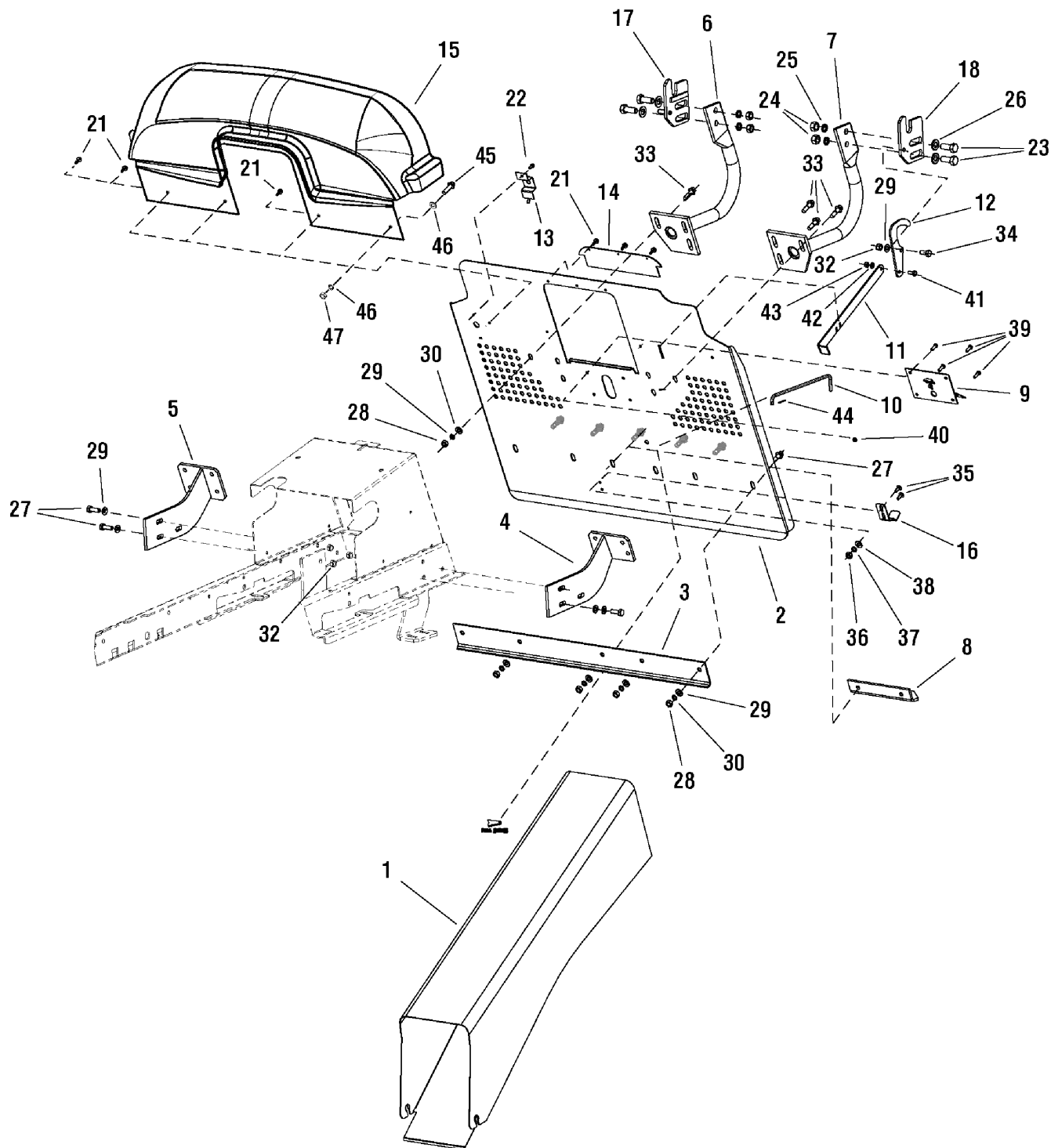
2690782 - Regent RD

2690783 - Regent RD

Back Plate Group

NOTE: Unless noted otherwise,
use the standard hardware torque
specification chart.

2988006



The above parts group applies to the following Mfg. Nos.:

2690782 - Regent RD
2690783 - Regent RD

Back Plate Group

REF NO	PART NO.	QTY.	DESCRIPTION
1	1735985	1	Tunnel
2	1735849	1	Back Plate
3	1735876	1	Brace
4	1735906	1	Holder, Back Plate Left
5	1735907	1	Holder, Back Plate Right
6	1735908	1	Holder, Collector Right
7	1735909	1	Holder, Collector, Left
8	1735903	1	Hitch
9	1735975	1	Switch, full collector
10	1735977	1	Tie rod ,Bypass 0-8045-260
11	1735978	1	Tie rod, Latch
12	1735915	1	Latch
13	1735887	1	Cover, Switch
14	1735939	1	Pad, Rubber 1-1332-332
15	1735983	1	Transition part, plastic
16	1735970	1	Spring, Collector lock
17	1735904	1	Holder, adjustable Right
18	1735905	1	Holder, adjustable, Left
21	1735961	6	Screw ST 5.5x19 DIN 7504-K BN1880
22	1735960	1	Screw ST 4.2x9.5 DIN 7504-K BN1880
23	1735857	4	Bolt M12x30
24	1735927	4	Nut M12
25	1735993	4	Washer 13
26	1735992	4	Washer 12
27	1735871	10	Bolt M8x25 DIN 6921 8.8
28	1735934	12	Nut M8
29	1735989	19	Washer 8.4
30	1736000	12	Washer 8
32	1735935	7	Nut M8
33	1735872	8	Bolt M8x30 DIN 6921 8.8
34	1735868	1	Bolt M8x20
35	1735860	2	Bolt M5x16
36	1735930	2	Nut M5
37	1735997	2	Washer 5.3
38	1735996	2	Washer 5
39	1735861	4	Bolt M5x16
40	1735931	4	Nut M5
41	1735865	1	Bolt M6x16
42	1735998	1	Washer 6.4
43	1735933	1	Nut M6
44	1735963	1	Spindle 2x20
45	1735858	1	Bolt M4x16
46	1735995	2	Washer 4,3
44	1735929	1	Nut M4

Footnotes

The above parts group applies to the following Mfg. Nos.:

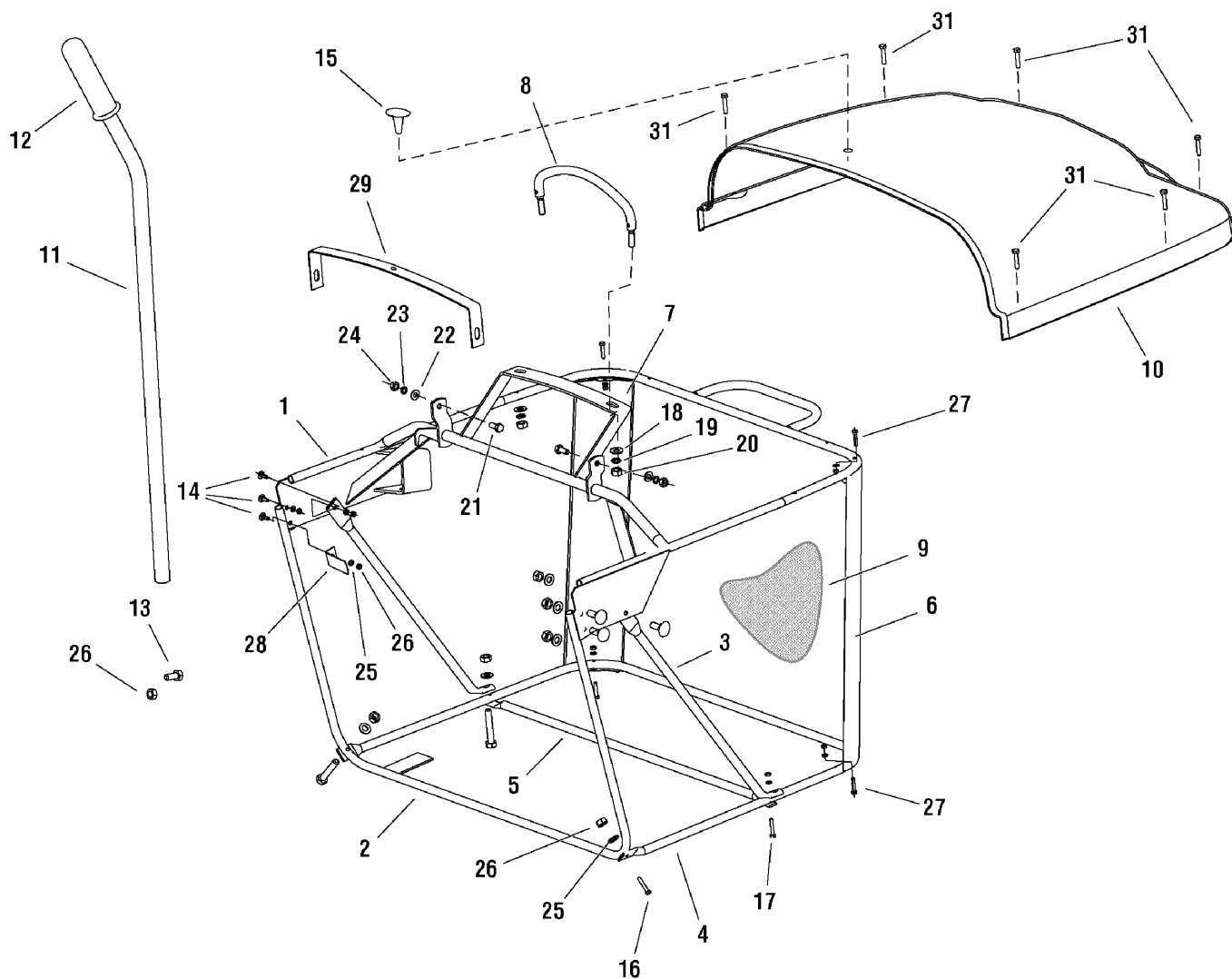
2690782 - Regent RD

2690783 - Regent RD

Collector Group

NOTE: Unless noted otherwise,
use the standard hardware torque
specification chart.

2988007



The above parts group applies to the following Mfg. Nos.:

2690782 - Regent RD

2690783 - Regent RD

Collector Group

REF NO	PART NO.	QTY.	DESCRIPTION
1	1735897	1	Frame -Top
2	1735898	1	Tube, Front
3	1735877	2	Brace
4	1735984	1	Tube, Bottom
5	1735953	1	Tube, Connecting
6	1736236	1	Reinforcement Left
7	1735954	1	Reinforcement Right
8	1735900	1	Handle, full
9	1735885	1	Coat, Fabric
10	1735982	1	Top, collector 0-7447-260
10	1735981	0	Top Collector 0-7447-261
11	1735916	1	Lever Dumping
12	1735901	1	Handle, rubber RC/M 25
13	1735859	1	Bolt M5x12
14	1735860	6	Bolt M5x16
15	1735948	1	Plug Plastic
16	1735863	2	Bolt M5x30
17	1735864	2	Bolt M5x35
18	1735990	2	Washer 10.5
19	1735991	2	Washer Lock 10
20	1735925	2	Nut M10
21	1735868	2	Bolt M8x20
22	1735989	2	Washer 8.4
23	1736000	2	Washer Lock 8
24	1735934	2	Nut M8
25	1735997	14	Washer 5.3
26	1735931	15	Nut M5
27	1735862	4	Bolt M5x25
28	1735971	1	Spring, Flat
29	1735955	1	Reinforcement, Top
31	--	6	Screw 6.3x32 DIN 7504-K

Footnotes

The above parts group applies to the following Mfg. Nos.:

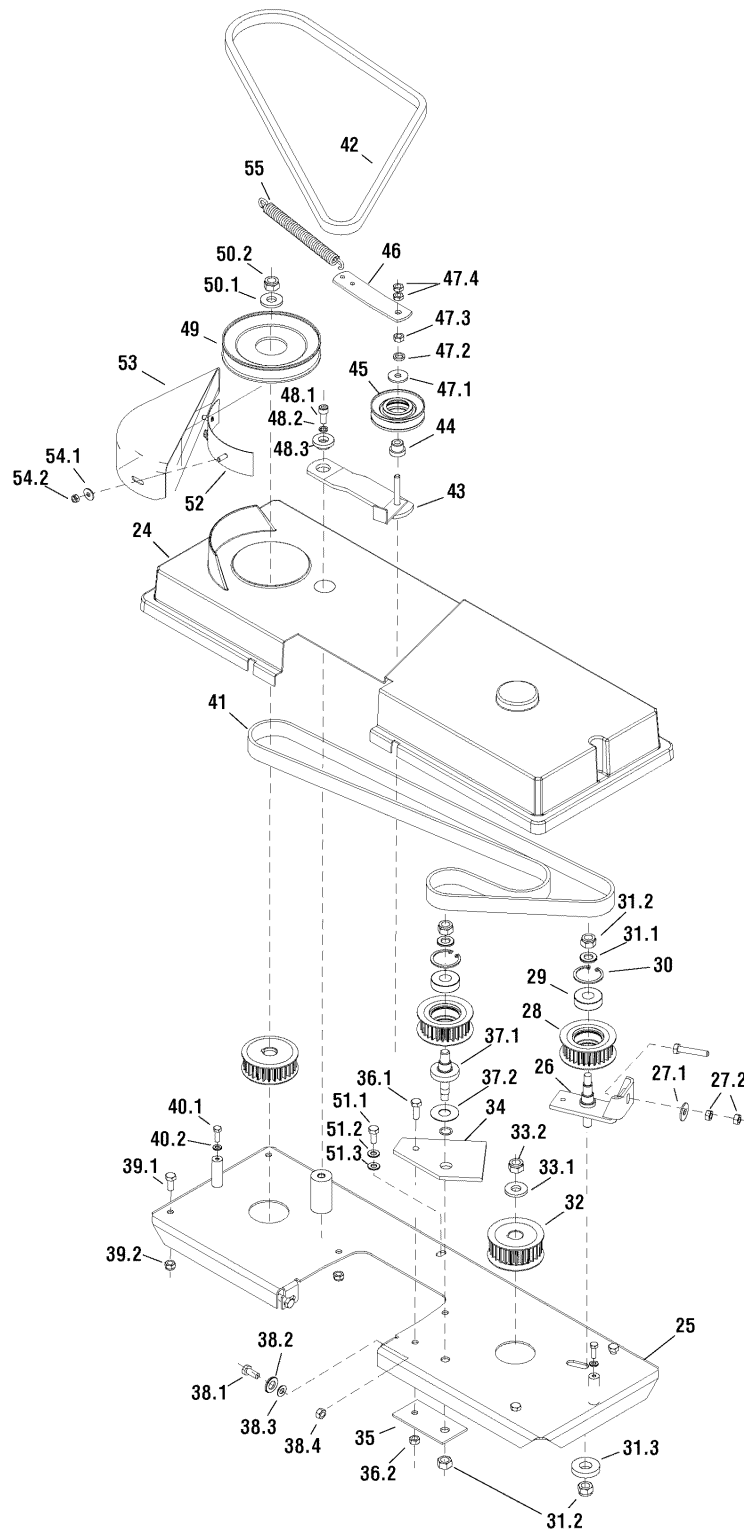
2690782 - Regent RD

2690783 - Regent RD

40" Mower Deck - Belt & Idler Arm Group

NOTE: Unless noted otherwise,
use the standard hardware torque
specification chart.

2988004



The above parts group applies to the following Mfg. Nos.:

2690782 - Regent RD

2690783 - Regent RD

40" Mower Deck - Belt & Idler Arm Group

REF NO	PART NO.	QTY.	DESCRIPTION
24	1735802	1	PLASTIC COVER 0-8547-369
25	1735794	1	MAIN BOARD
26	1735787	1	FOOTING, Complete
27.1	1735846	1	WASHER, Zinc 9
27.2	1735799	2	NUT, M 8
28	1735781	1	PULLEY, Belt 28 Z
29	1735779	2	BEARING, 6203 2 RS C 66IB
30	1735813	2	RING, Safety 40
31.1	1735837	2	WASHER, 13
31.2	1735796	4	NUT, M 12
31.3	1735842	1	WASHER
32	1735784	2	PULLEY, Belt
33.1	1735834	1	WASHER 0-9220-727
33.2	1735796	1	NUT, M 12
34	1735804	1	REINFORCEMENT
35	1735805	1	REINFORCEMENT
36.1	1735818	1	SCREW, M 8X25
36.2	1735801	1	NUT, M 8
37.1	1735827	1	STUD
37.2	1735841	1	WASHER
38.1	1735843	2	SCREW, Zinc M 8X20
38.2	1735837	2	WASHER, 13
38.3	1735839	2	WASHER, 8.4
38.4	1735801	2	NUT, M 8
39.1	1735820	6	SCREW M 8X40
39.2	1735801	6	NUT, M 8
40.1	1735816	2	SCREW M 6X20
40.2	1735844	6	WASHER, Zinc 6.6
41	1735832	1	BELT, Two Side Tooth K+K20DS 1760
42	1735833	1	V BELT, B54 17X1375 KREBS
43	1735790	1	HOLDER, Complete
44	1735826	1	STUD, 0-9321-263
45	1735811	1	ROLLER, W 3500-3712
46	1735788	1	FOOTING
47.1	1735845	1	WASHER, Zinc 9
47.2	1735838	1	WASHER, 8
47.3	1735799	1	NUT, M 8
47.4	1735800	2	NUT M 8
48.1	1735817	1	SCREW, M 8X20 10.9 ZN DIN 912
48.2	1735838	1	WASHER, 8
48.3	1735836	1	WASHER, 0-9221-222
49	1735782	1	PULLEY, Belt 9-3325-234 - Complete
50.1	1735834	1	WASHER, 0-9220-727
50.2	1735796	1	NUT, M 12

Footnotes

The above parts group applies to the following Mfg. Nos.:

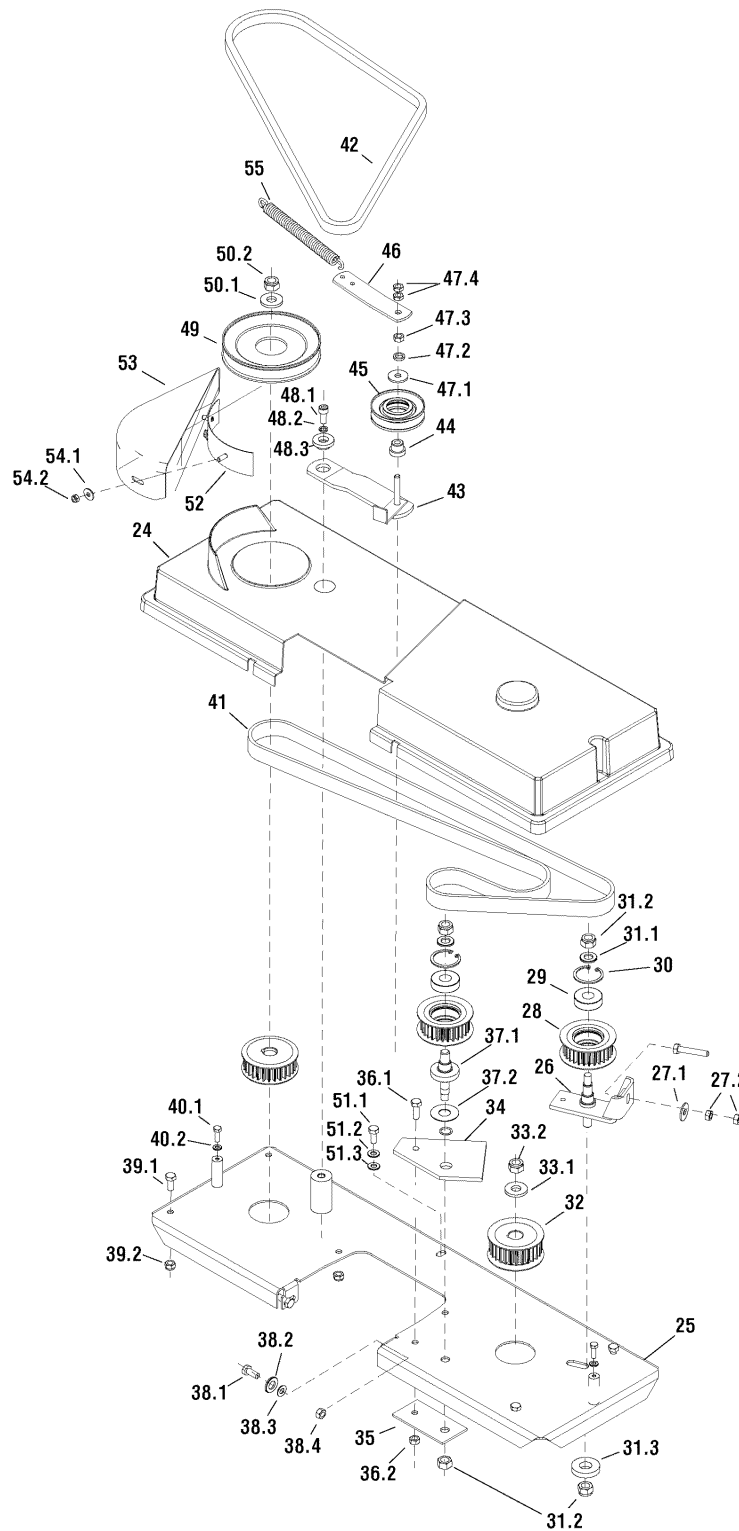
2690782 - Regent RD

2690783 - Regent RD

40" Mower Deck - Belt & Idler Arm Group

NOTE: Unless noted otherwise,
use the standard hardware torque
specification chart.

2988004



The above parts group applies to the following Mfg. Nos.:

2690782 - Regent RD

2690783 - Regent RD

40" Mower Deck - Belt & Idler Arm Group

REF NO	PART NO.	QTY.	DESCRIPTION
51.1	1735820	1	SCREW, M 8X40
51.2	1735838	1	WASHER, 8
51.3	1735839	1	WASHER, 8.4
52	1735806	1	REINFORCEMENT
53	1735783	1	BELT PULLEY COVER 0-8534-203
54.1	1735844	2	WASHER, Zinc 6.6
54.2	1735798	2	NUT, M 6
55	1735825	1	SPRING, 0-9746-460

Footnotes

The above parts group applies to the following Mfg. Nos.:

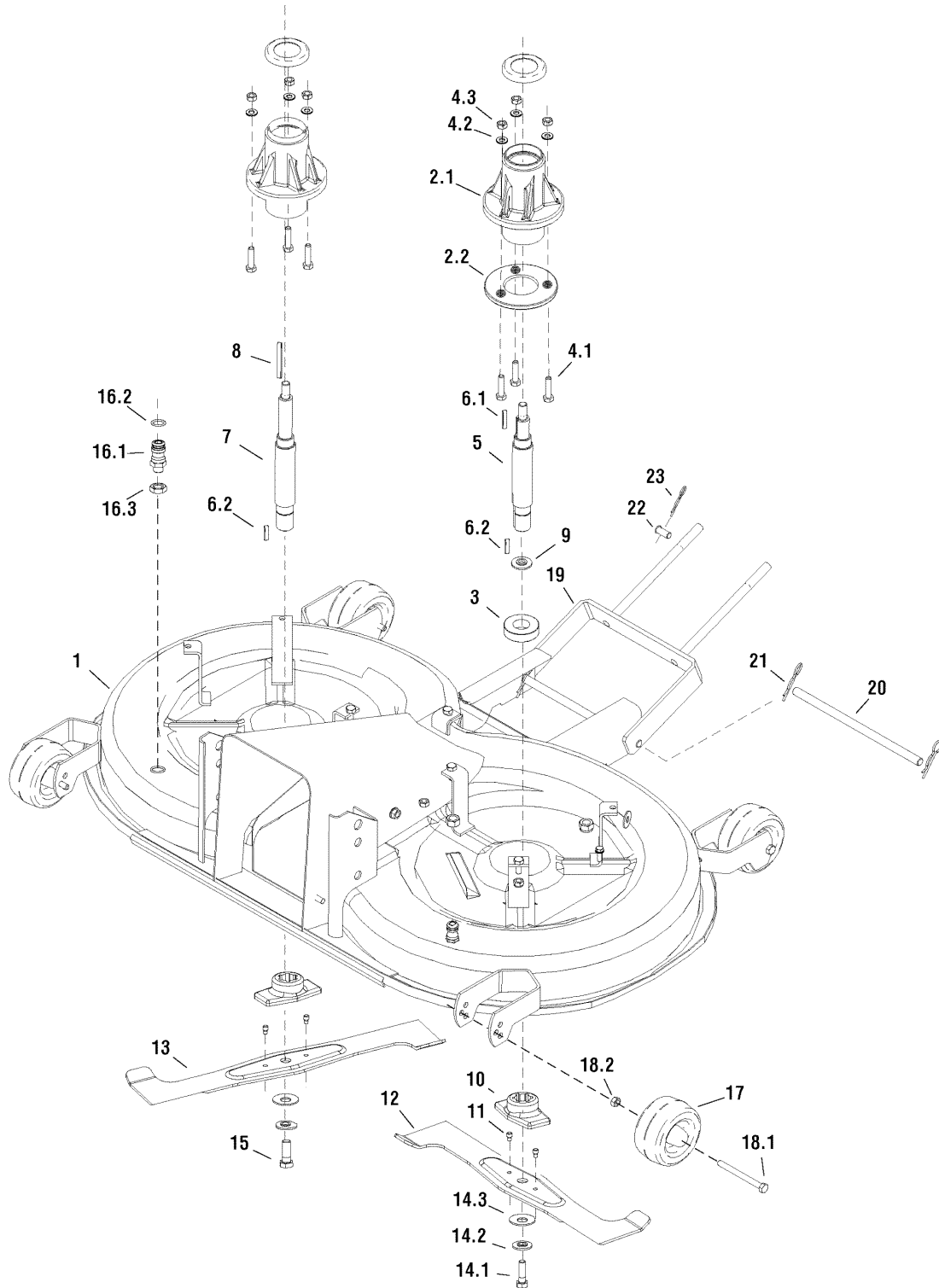
2690782 - Regent RD

2690783 - Regent RD

40" Mower Deck - Housing, Hitch, Arbors & Blades Group

2988005

NOTE: Unless noted otherwise,
use the standard hardware torque
specification chart.



The above parts group applies to the following Mfg. Nos.:

2690782 - Regent RD

2690783 - Regent RD

40" Mower Deck - Housing, Hitch, Arbors & Blades Group

REF NO	PART NO.	QTY.	DESCRIPTION
1	1735888	1	CUTTING KNIFE COVER - COMPLETE
2.1	1735791	2	HOUSING
2.2	1735807	2	REINFORCEMENT
3	1735780	4	BEARING 6205 2 RS C 66IB
4.1	1735819	6	SCREW M 8X35
4.2	1735839	6	WASHER 8.4
4.3	1735801	6	NUT M 8
5	1735823	1	SHAFT
6.1	1735830	1	TONGUE 6 H 9X6X30
6.2	1735829	2	TONGUE 6 H 9X6X25
7	1735822	1	SHAFT
8	1735831	1	TONGUE 6 H 9X6X63
9	1735812	2	SAFETY RING 25
10	1735792	2	HOUSING
11	1735824	4	SHEAR STUD 0-9311-736
12	1735809	1	RIGHT ROTARY CUTTING KNIFE
13	1735793	1	LEFT ROTARY CUTTING KNIFE
14.1	1735815	1	SCREW 0-9011-287 M 10
14.2	1735835	2	WASHER 0-9220-749
14.3	1735840	2	WASHER BN 806-40X16.3X2X3.1
15	1735814	1	SCREW 0-9011-283 M 10 - LEFT THREAD
16.1	1735803	2	QUICK FASTENER 0-9026-246
16.2	1735810	2	RING 13X2 NBR
16.3	1735797	2	NUT M 12
17	1735808	4	RIGHT CUTTING WHEEL ETOP 100-8,2
18.1	1735821	4	SCREW M 8X90
18.2	1735801	4	NUT M 8
19	1735789	1	FRONT MOUNT
20	1735828	1	STUD
21	1735785	2	FLEXIBLE PIN 0-9245-240
22	1735795	2	MOWING STUD 1-9310-290
23	1735786	4	FLEXIBLE PIN 0-9245-999

Footnotes

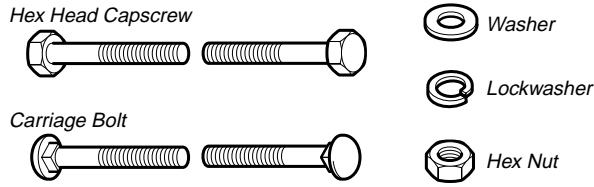
The above parts group applies to the following Mfg. Nos.:

2690782 - Regent RD

2690783 - Regent RD

Hardware Identification & Torque Specifications

Common Hardware Types

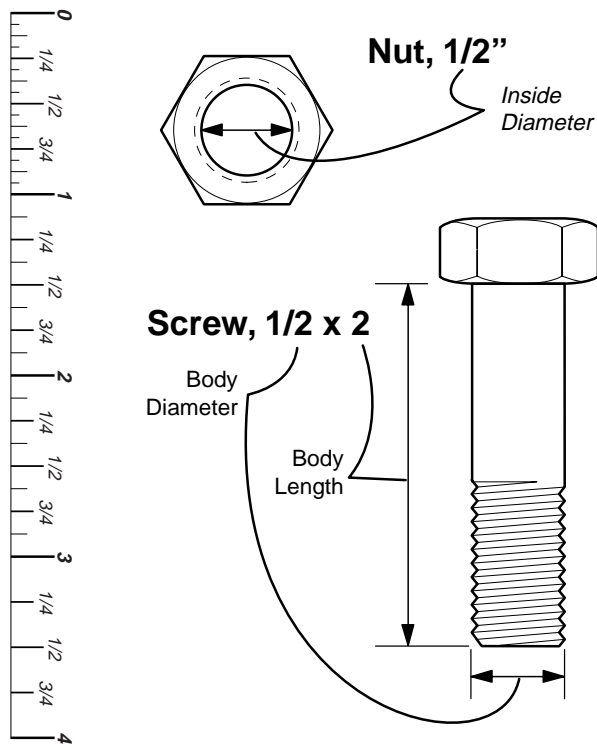


Standard Hardware Sizing

When a washer or nut is identified as **1/2"**, this is the *Nominal size*, meaning the *inside diameter* is 1/2 inch; if a second number is present it represents the *threads per inch*

When bolt or capscrew is identified as **1/2 - 16 x 2"**, this means the *Nominal size*, or *body diameter* is 1/2 inch; the second number represents the *threads per inch* (16 in this example, and the final number is the *body length* of the bolt or screw (in this example 2 inches long).

The guides and ruler furnished below are designed to help you select the appropriate hardware and tools.



Torque Specification Chart						
FOR STANDARD MACHINE HARDWARE (Tolerance ± 20%)						
Hardware Grade	No Marks SAE Grade 2		SAE Grade 5		SAE Grade 8	
	in/lbs ft/lbs	Nm.	in/lbs ft/lbs	Nm.	in/lbs ft/lbs	Nm.
8-32	19	2.1	30	3.4	41	4.6
8-36	20	2.3	31	3.5	43	4.9
10-24	27	3.1	43	4.9	60	6.8
10-32	31	3.5	49	5.5	68	7.7
1/4-20	66	7.6	8	10.9	12	16.3
1/4-28	76	8.6	10	13.6	14	19.0
5/16-18	11	15.0	17	23.1	25	34.0
5/16-24	12	16.3	19	25.8	27	34.0
3/8-16	20	27.2	30	40.8	45	61.2
3/8-24	23	31.3	35	47.6	50	68.0
7/16-14	30	40.8	50	68.0	70	95.2
7/16-20	35	47.6	55	74.8	80	108.8
1/2-13	50	68.0	75	102.0	110	149.6
1/2-20	55	74.8	90	122.4	120	163.2
9/16-12	65	88.4	110	149.6	150	204.0
9/16-18	75	102.0	120	163.2	170	231.2
5/8-11	90	122.4	150	204.0	220	299.2
5/8-18	100	136	180	244.8	240	326.4
3/4-10	160	217.6	260	353.6	386	525.0
3/4-16	180	244.8	300	408.0	420	571.2
7/8-9	140	190.4	400	544.0	600	816.0
7/8-14	155	210.8	440	598.4	660	897.6
1-8	220	299.2	580	788.8	900	1,244.0
1-12	240	326.4	640	870.4	1,000	1,360.0

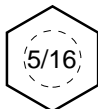
NOTES

- These torque values are to be used for all hardware excluding: locknuts, self-tapping screws, thread forming screws, sheet metal screws and socket head setscrews.
- Recommended seating torque values for locknuts:
 - for prevailing torque locknuts - use 65% of grade 5 torques.
 - for flange whizlock nuts and screws - use 135% of grade 5 torques.
- Unless otherwise noted on assembly drawings, all torque values must meet this specification.

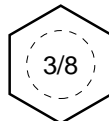
Wrench & Fastener Size Guide



1/4" Bolt or Nut
Wrench—7/16"



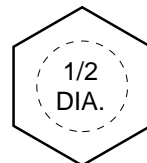
5/16" Bolt or Nut
Wrench—1/2"



3/8" Bolt or Nut
Wrench—9/16"



7/16" Bolt or Nut
Wrench (Bolt)—5/8"
Wrench (Nut)—11/16"



1/2" Bolt or Nut
Wrench—3/4"

Simplicity

MANUFACTURING, INC.
500 N. Spring Street / PO Box 997
Port Washington, WI 53074-0997 USA

www.simplicitymfg.com

Briggs and Stratton Yard Power Products Group
Copyright © 2008 by Briggs and Stratton Corporation
Milwaukee, WI, USA. All rights reserved

